



Zen-Racing

1/12 SCALE ELECTRIC PANCAR

FRAXION

INSTRUCTION MANUAL

1 REAR SUSPENSION

BAG A



ZENH465 x 1
M3x12mm Set Screw



ZENA107 x 1
Aluminum 5mm Pivot Ball



ZENH433 x 2
M3x10mm Buttonhead Screw



ZENH463 x 1
M3x8mm Set Screw



ZENH442 x 4
M3x6mm Flathead Screw

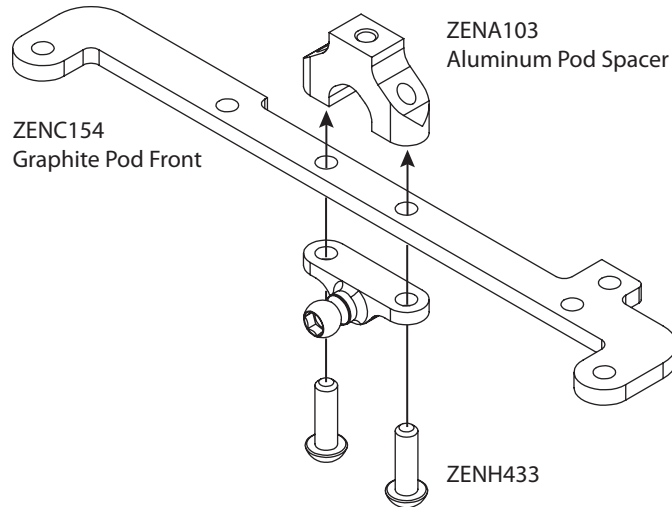
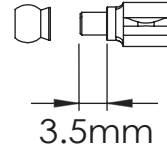


ZENH431 x 5
M3x6mm Buttonhead Screw

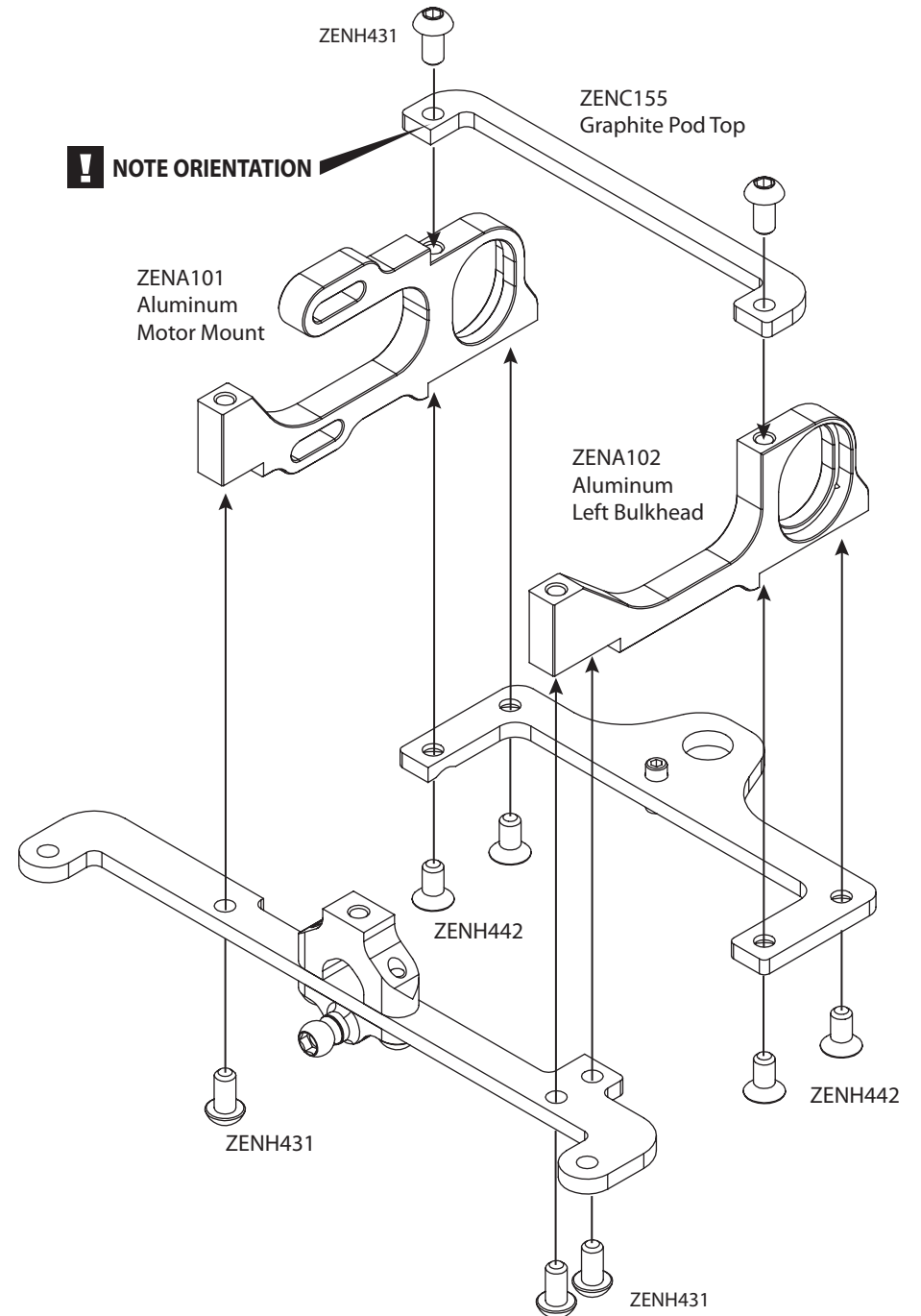
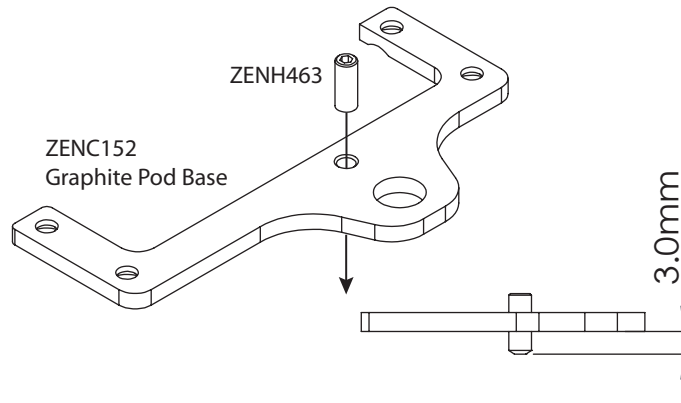
PIVOT BLOCK / REAR BULKHEAD

ZENA104
Aluminum Ball Block

ZENA107 ZENH465



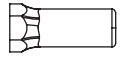
REAR SUSPENSION DROOP ADJUSTMENT



1 REAR SUSPENSION

RXGT12

BAG A



ZENK109 x 1
Rear Damper Post

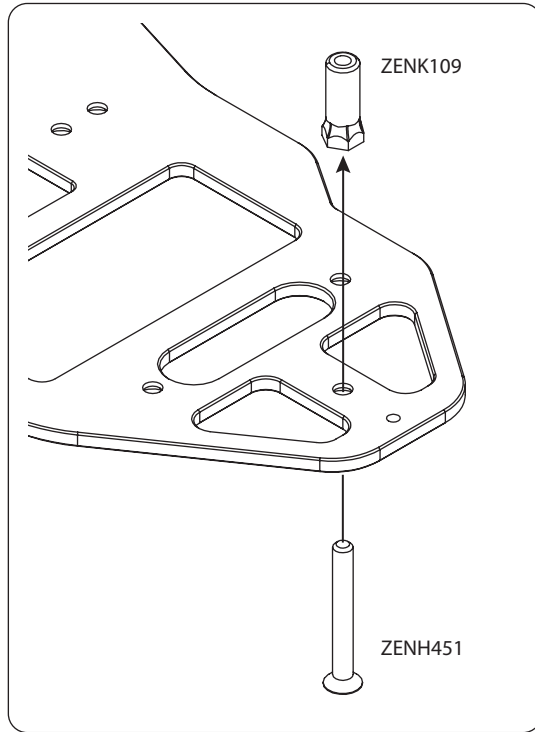


ZENH451 x 1
M3x25mm Flathead Screw



ZENH442 x 4
M3x6mm Flathead Screw

PIVOT BLOCK / REAR BULKHEAD



ZENP100
Pivot Block (Delrin)

ZENA100
2.5mm Aluminum Main Chassis

ZENH442

ZENH442

1 REAR SUSPENSION

BAG A



ZENH402 x 4
M2x6mm Buttonhead Screw



ZENA107 x 4
Aluminum 5mm Pivot Ball



ZENH441 x 2
M3x5mm Flathead Screw



ZENH431 x 6
M3x6mm Buttonhead Screw

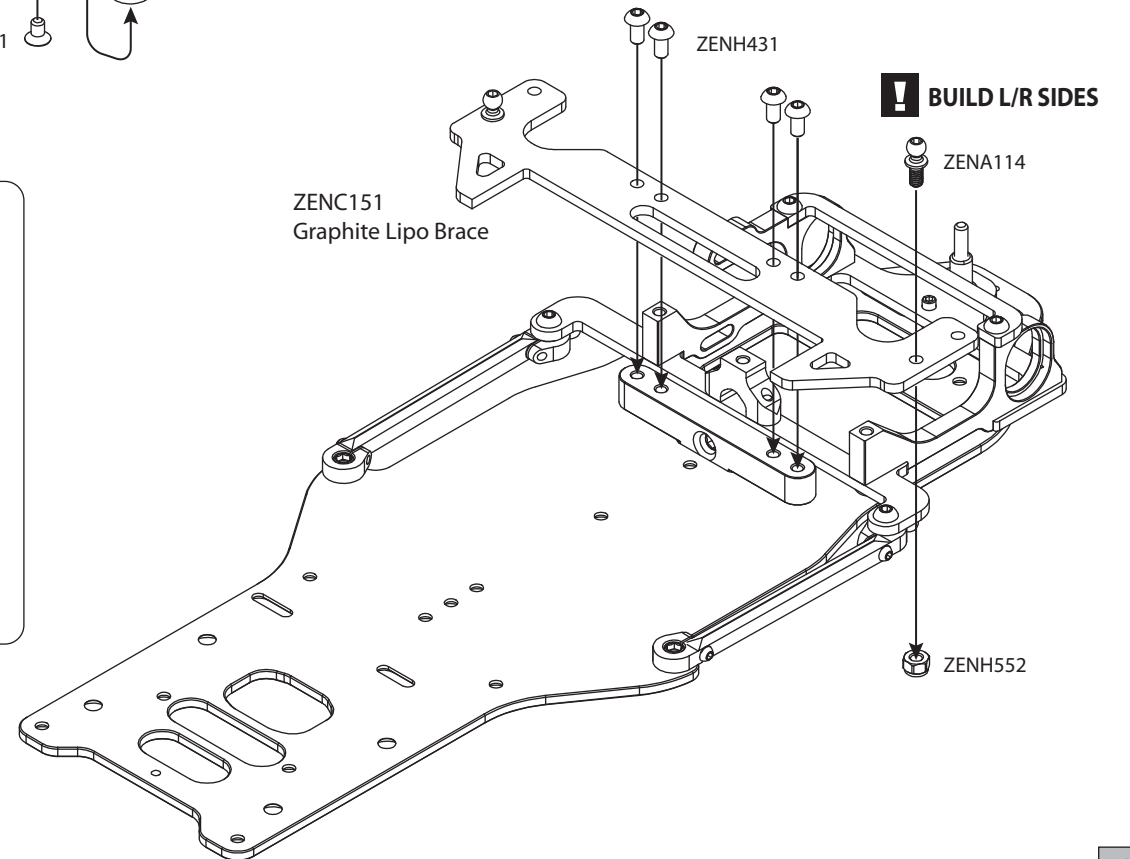
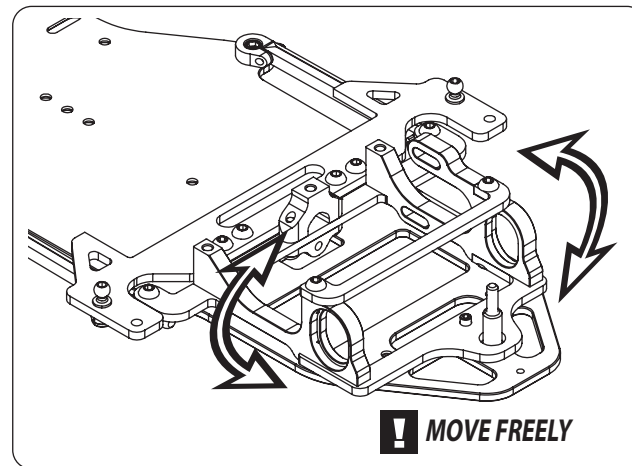
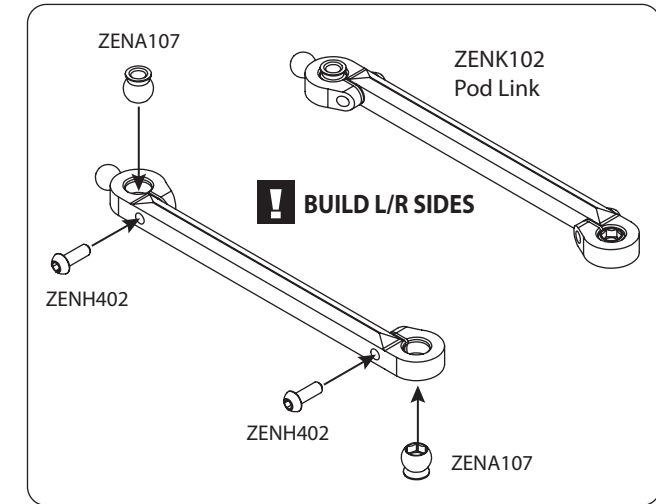
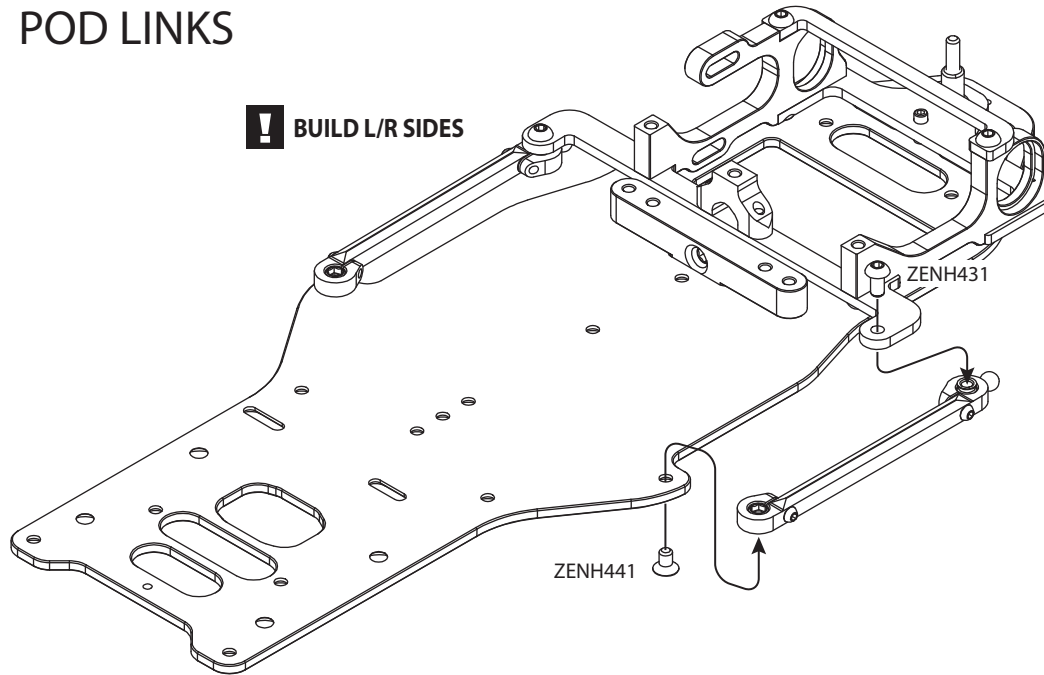


ZENA114 x 2
Aluminum 4.3x11.8mm Ballstud



ZENH552 x 2
M3 Locknut

POD LINKS



1 REAR SUSPENSION

BAG A



ZENH431 x 3
M3x6mm Buttonhead Screw



ZENA114 x 2
Aluminum 4.3x11.8mm Ballstud



ZENH552 x 2
M3 Locknut



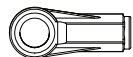
ZENP303S x 2
4.3mm Plastic Ball Cup, Short



ZENH463 x 2
M3x8mm Set Screw

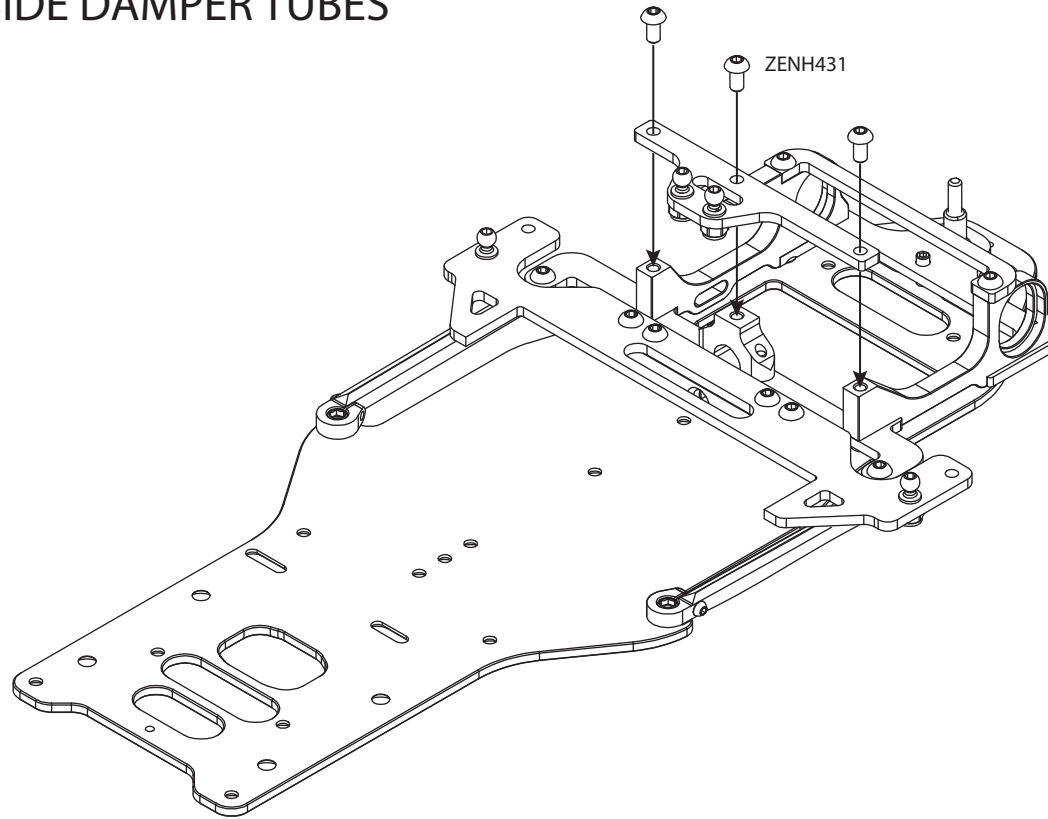


ZENS003 x 2
Side Springs

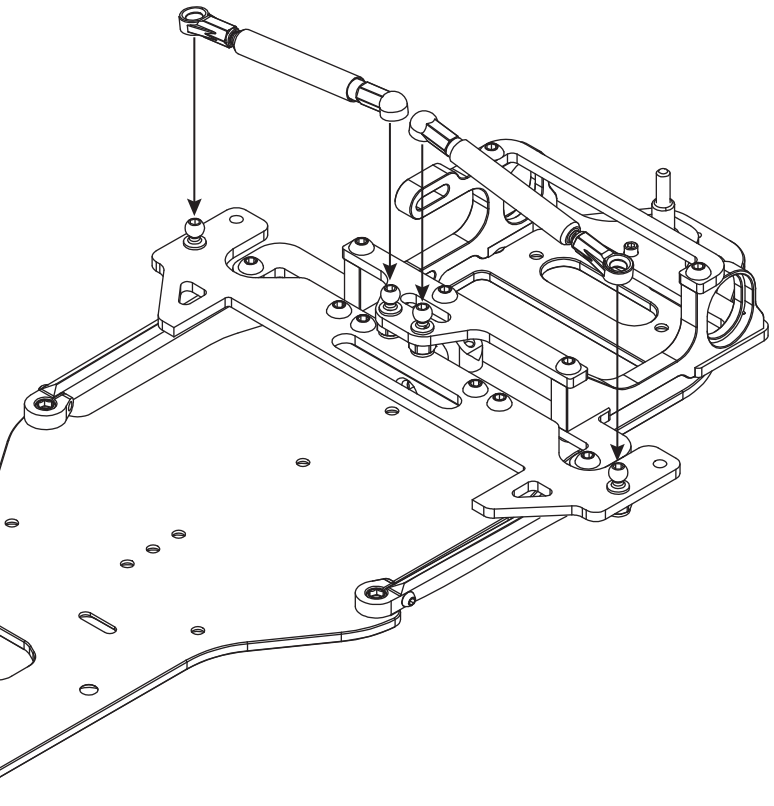
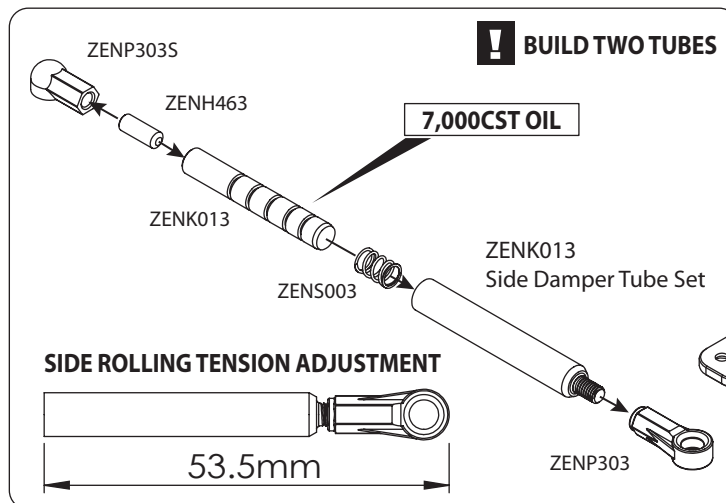
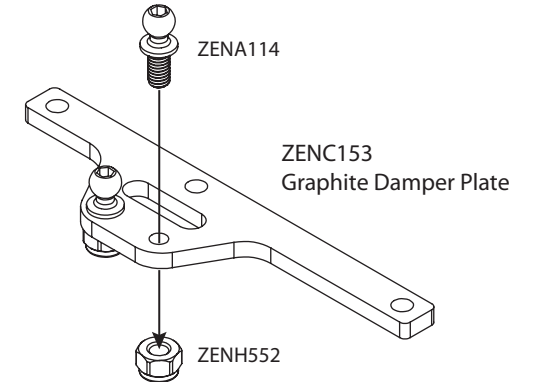


ZENP303 x 2
4.3mm Plastic Ball Cup, Long

SIDE DAMPER TUBES



! BUILD L/R SIDE BALLSTUDS



1 REAR SUSPENSION

BAG A



ZENH600 x 1
Rear Damper O-ring



ZENK109 x 1
Rear Damper Ring



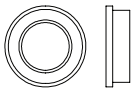
ZENS201 x 1
Rear Damper Spring



ZENK109 x 1
Rear Damper Plastic Top



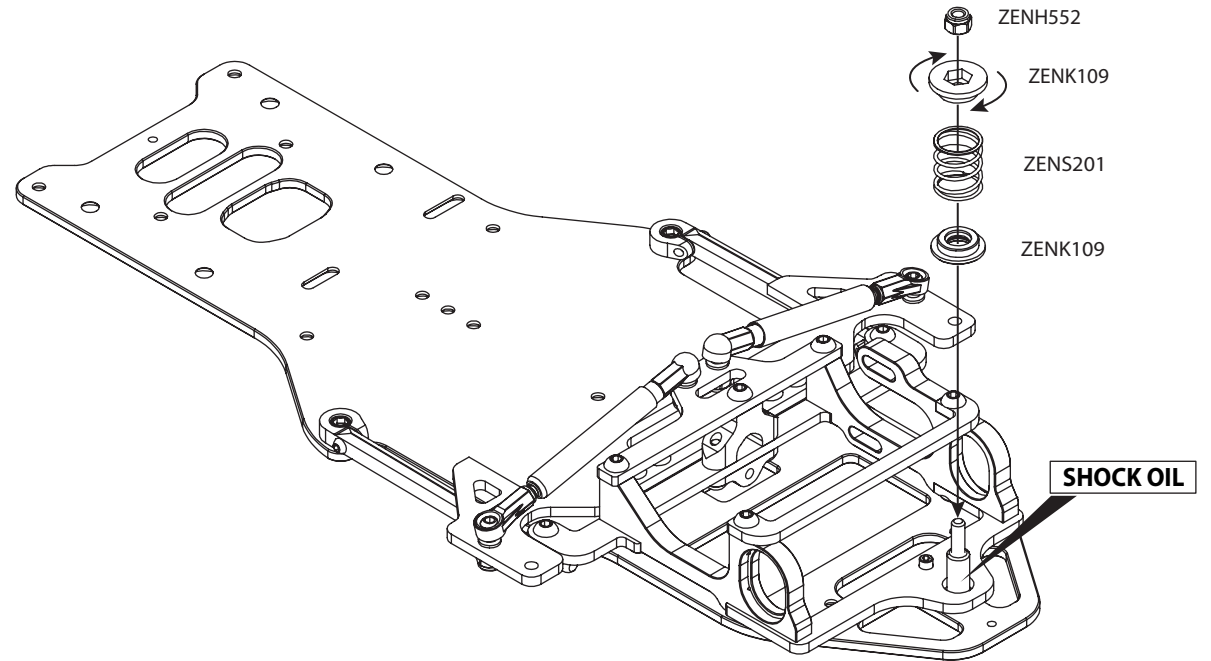
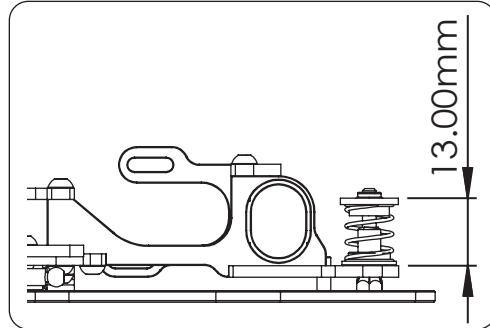
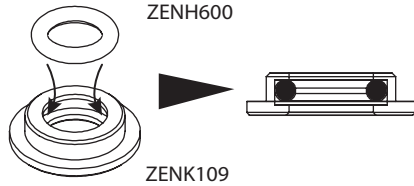
ZENH552 x 1
M3 Locknut



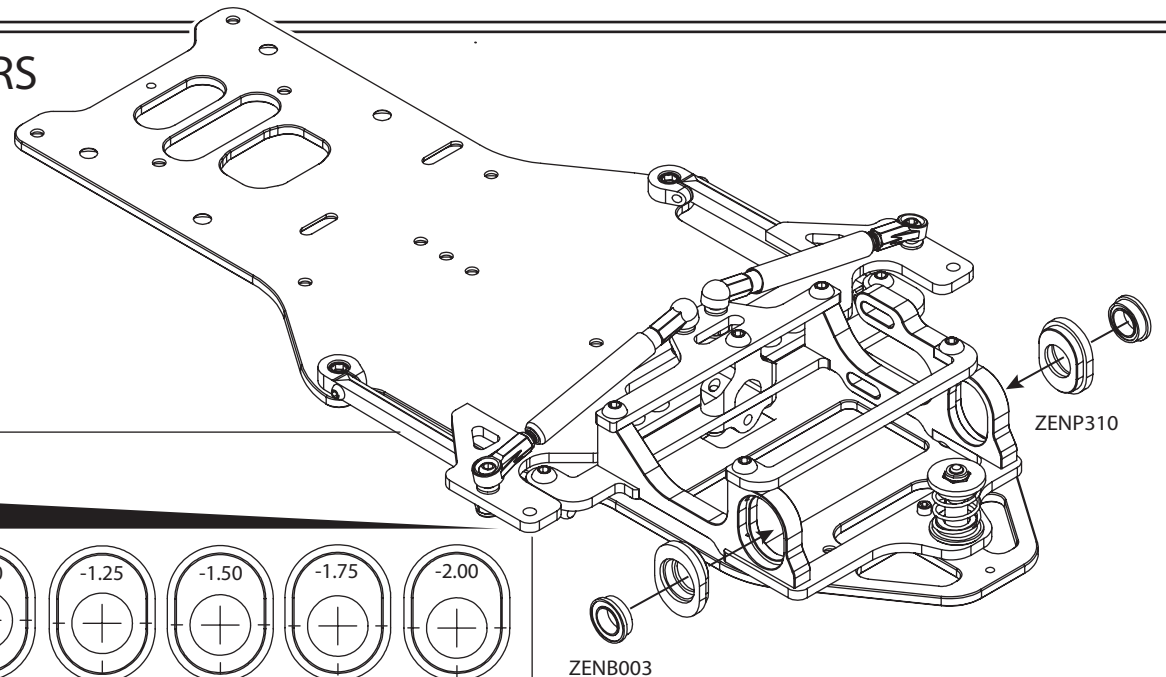
ZENB003 x 2
Bearing, 3/8 x 1/4, Flanged

REAR DAMPER

REAR DAMPER RING

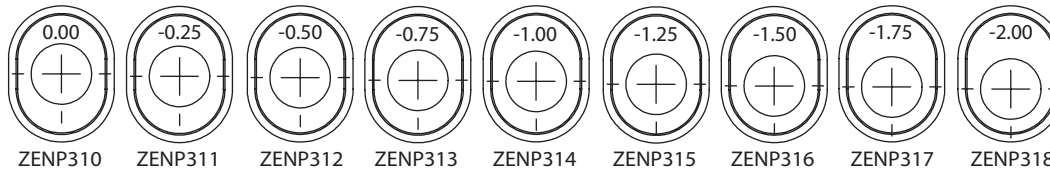


REAR RIDE HEIGHT ADJUSTERS



RIDE HEIGHT ADJUSTERS

0.25MM PER STEP FINE RIDE HEIGHT ADJUSTMENT



2 BALL DIFFERENTIAL

BAG B



ZENA105 x 1
Rear Axle Spacer



ZENH431 x 1
M2.5 x 6 Socket Cap Screw



ZENB003 x 3
Bearing, 3/8 x 1/4, Flanged



ZENA022-12 x 12
1/8" Diff Balls



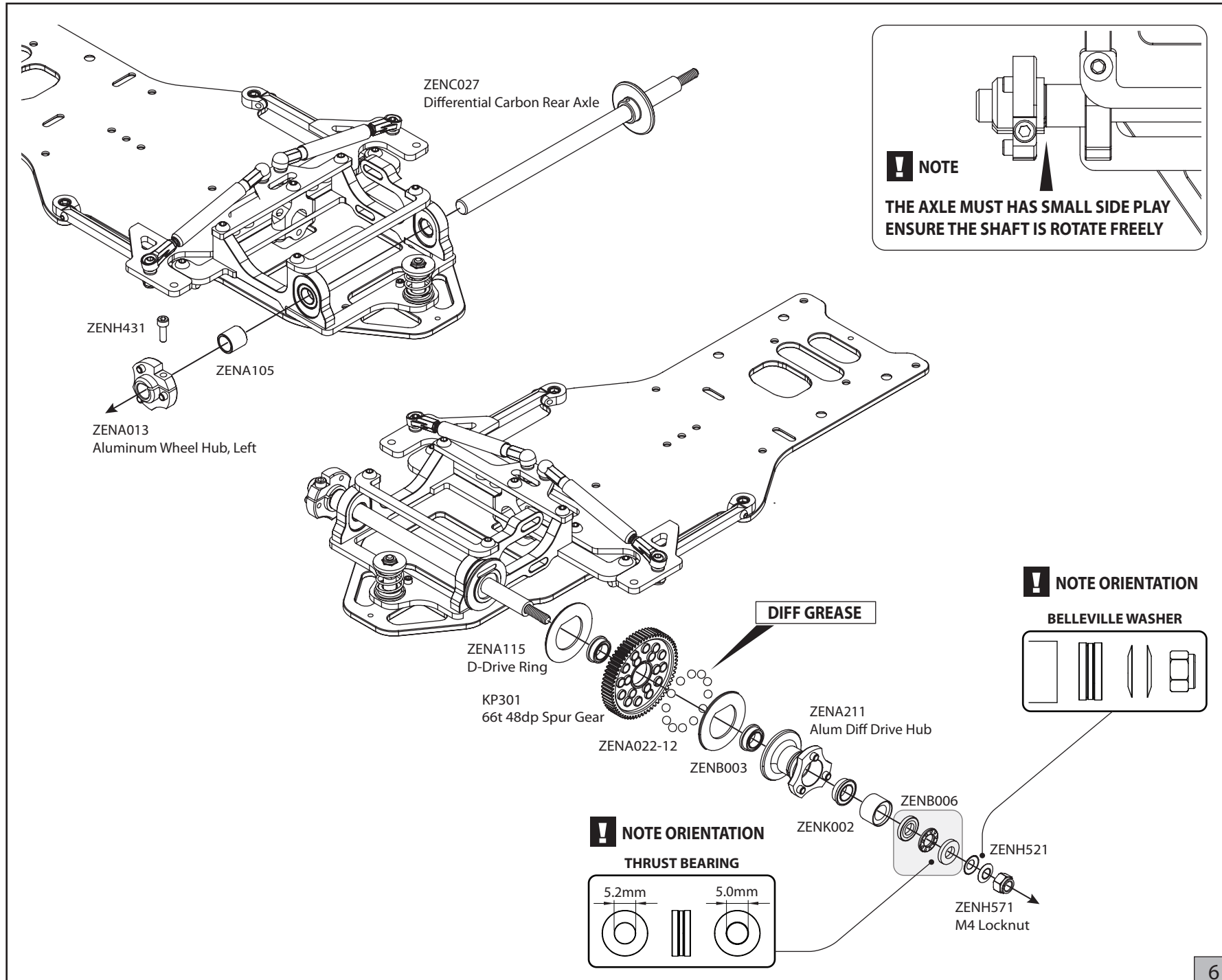
ZENK002
Aluminum Thrust Cone



ZENB006 x 1
Diff thrust bearing



ZENH521 x 2
Thrust Cone washers



NOTE

THE AXLE MUST HAVE SMALL SIDE PLAY
ENSURE THE SHAFT IS ROTATE FREELY

NOTE ORIENTATION

BELLEVILLE WASHER

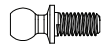
NOTE ORIENTATION

THRUST BEARING

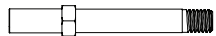
FRONT SUSPENSION

RXGT12

BAG C



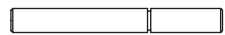
ZENA114 x 2
Aluminum 4.3x11.8mm Ballstud



ZENA106 x 2
Stub Axle



ZENH412 x 2
M2.5 x 4mm Buttonhead Screw



ZENA214 x 2
Kingpin



ZENS005 x 2
Front Springs



ZENH481 x 2
M2.5 E-Clip

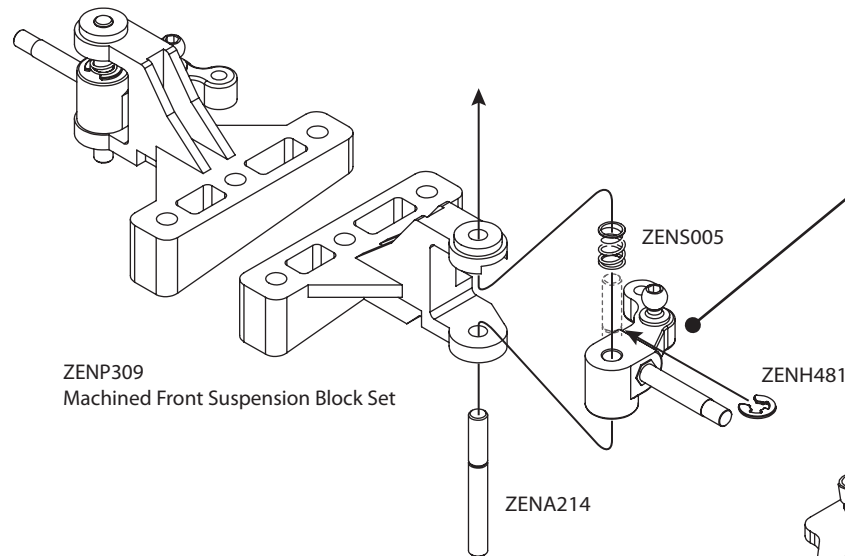


ZENK009 x 8
M4 x 8 x 0.5 Shim Washers

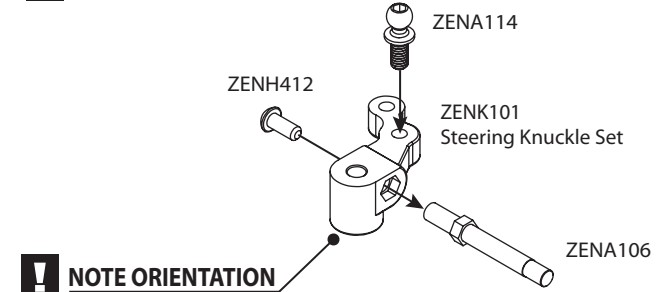


ZENH475 x 4
M4x10mm Flathead Screw

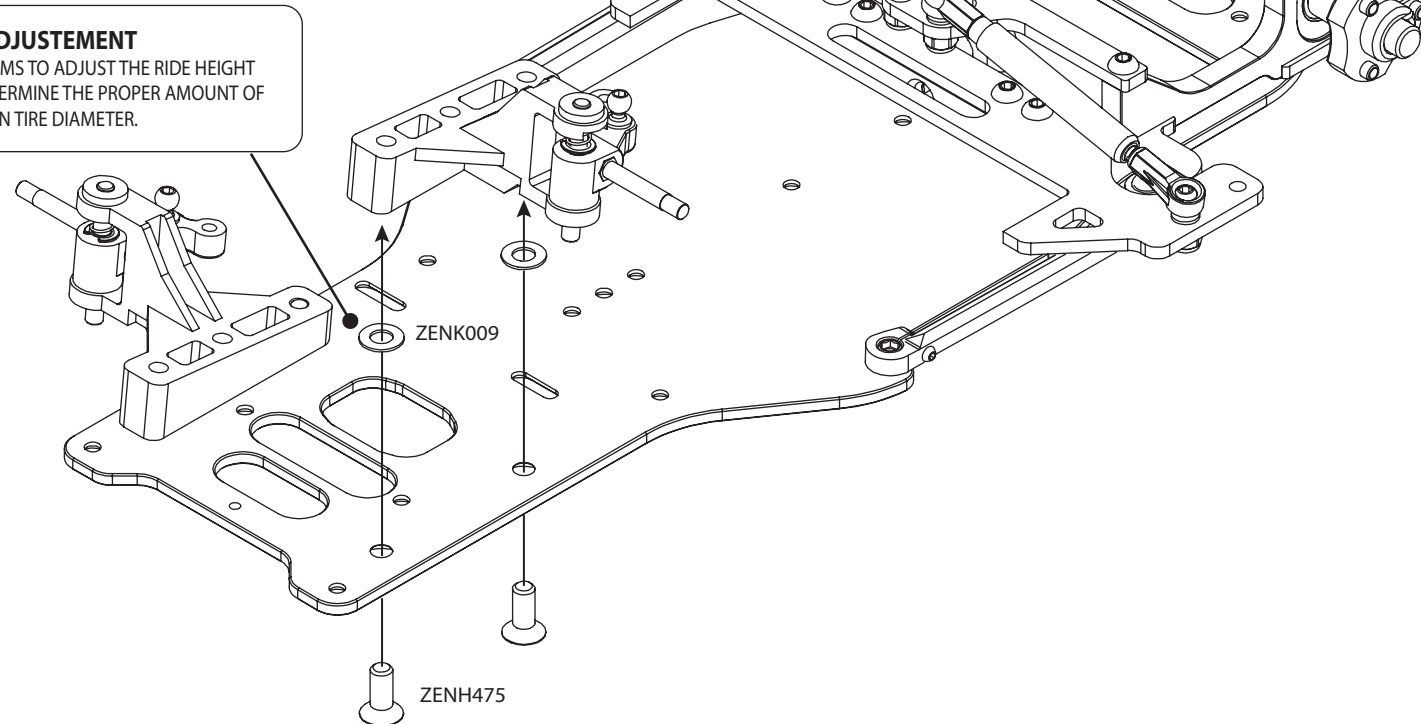
! BUILD L/R FRONT SUSPENSION ARMS



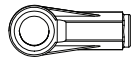
! BUILD L/R STEERING KNUCKLES



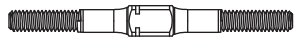
! RIDE HEIGHT ADJUSTEMENT
THE NUMBER OF SHIMS TO ADJUST THE RIDE HEIGHT OF CHASSIS, SO DETERMINE THE PROPER AMOUNT OF SHIMMING BASED ON TIRE DIAMETER.



BAG C



ZENP303 x 4
4.3mm Plastic Ball Cup, Long



ZENA017BL x 2
Alum 37.5mm Turnbuckle, Black



ZENA114 x 2
Aluminum 4.3x11.8mm Ballstud



ZENH552 x 2
M3 Locknut



ZENH431 x 2
M3x6mm Buttonhead Screw

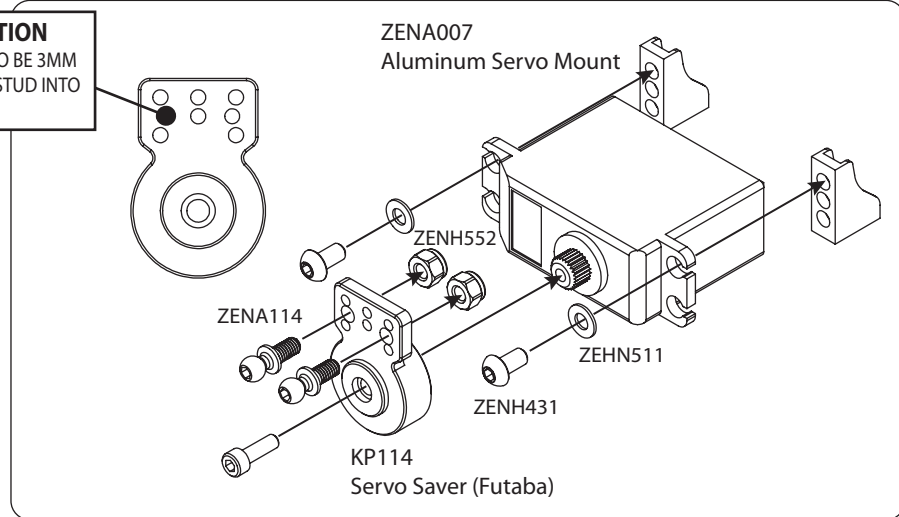
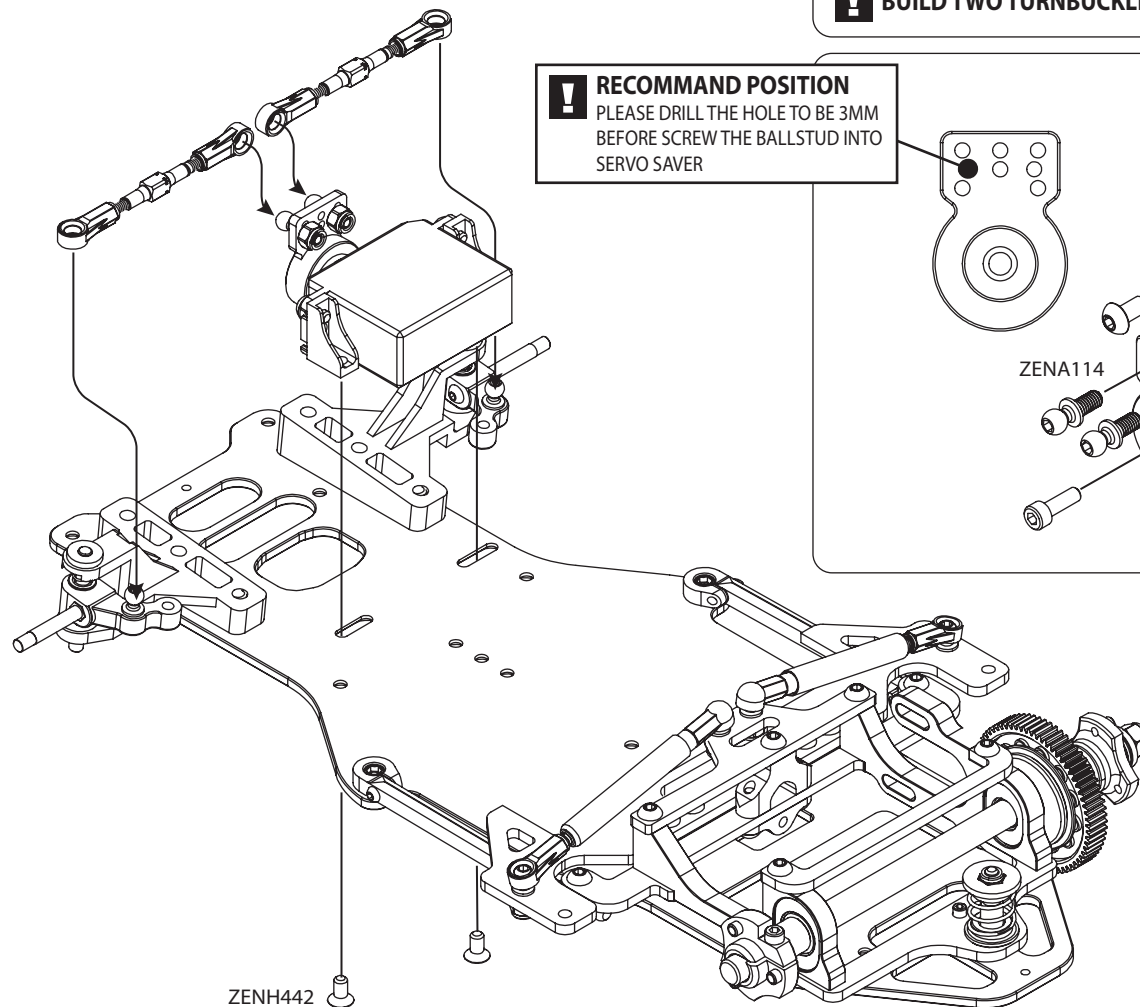
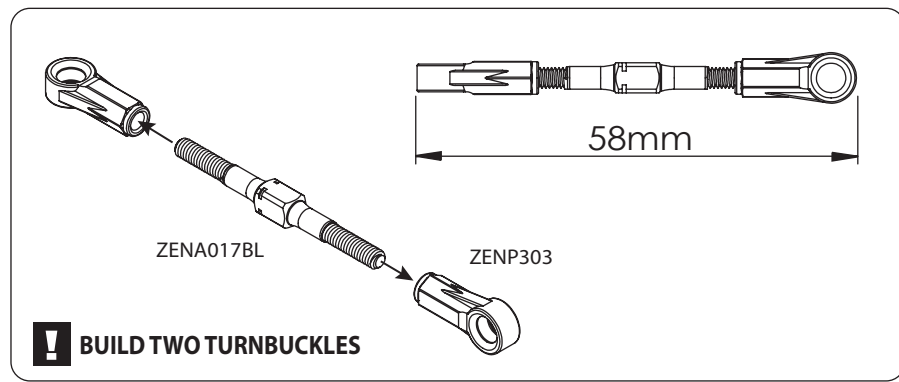


ZEHN511 x 2
M3 Washers



ZENH442 x 2
M3x6mm Flathead Screw

TURNBUCKLES AND SERVO



4 FINAL INSTALLATION

RXGT12

BAG D



ZENH433 x 4
M3x10mm Buttonhead Screw



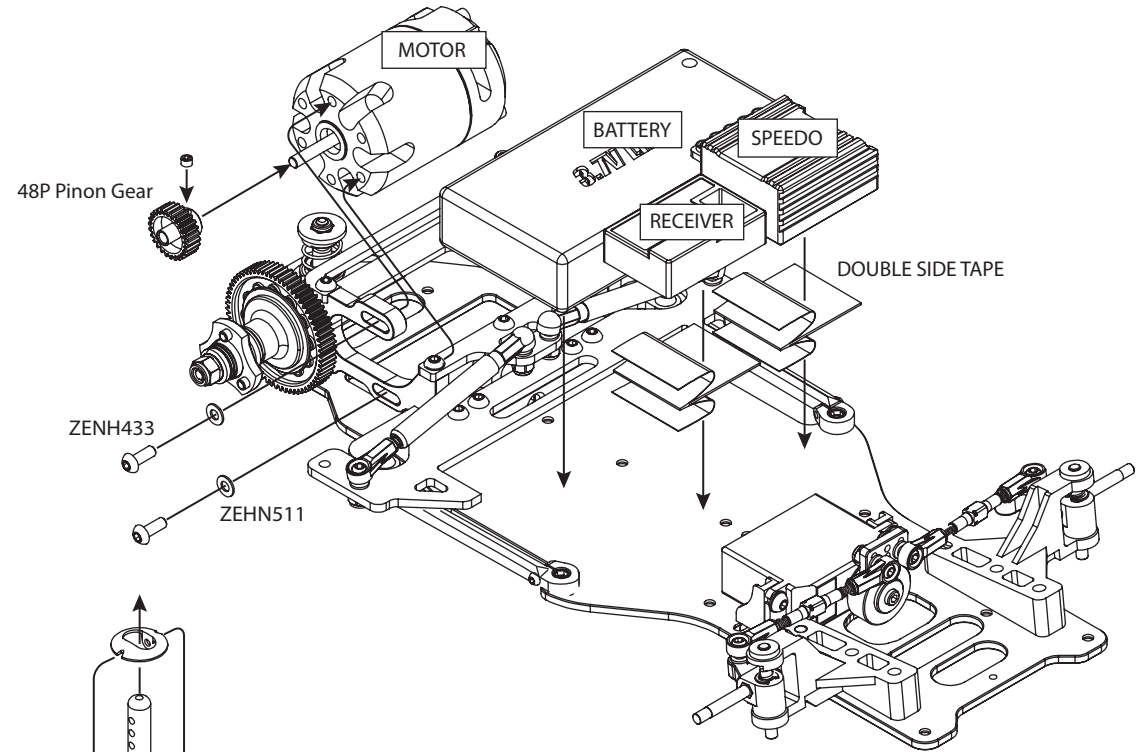
ZEHN511 x 2
M3 Washers



ZENH444 x 2
M3x10mm Flathead Screw

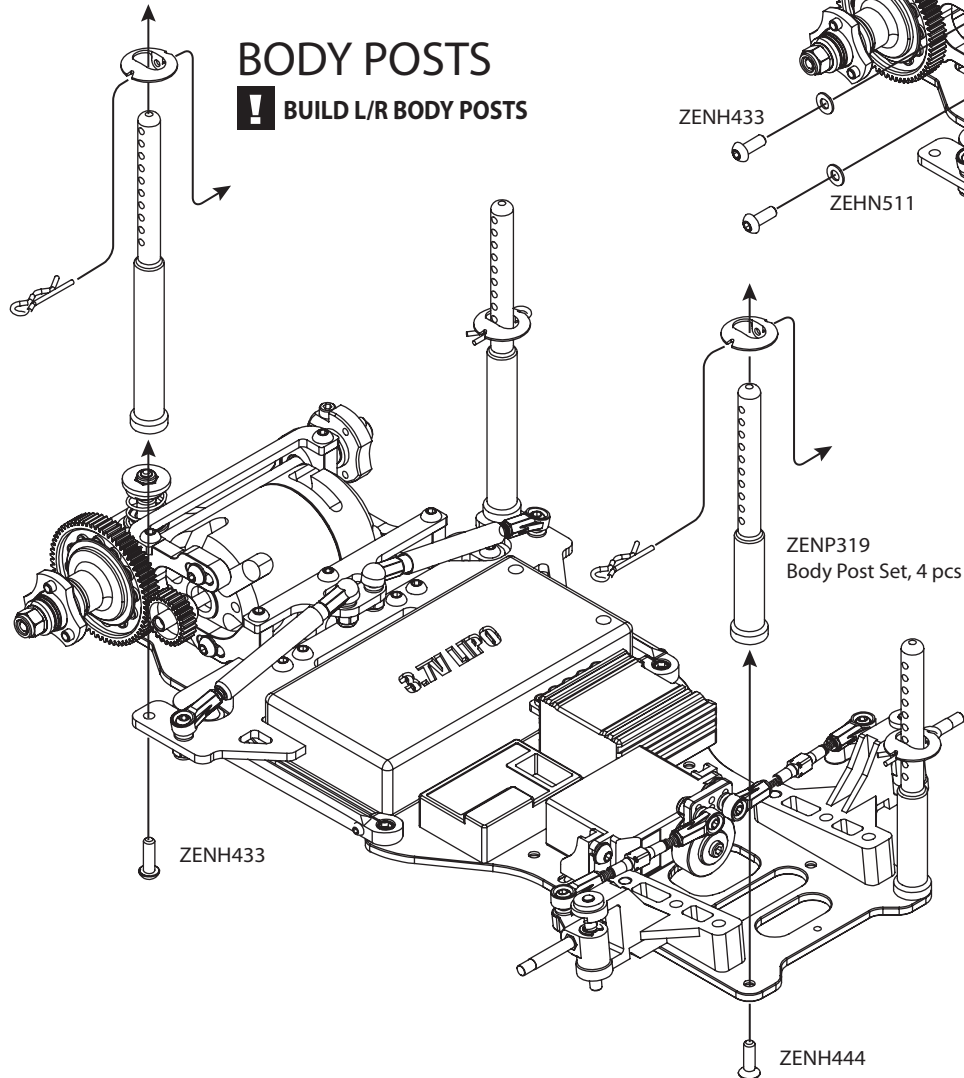
ELECTRIC ITEMS AND MOTOR

! PLEASE FIX THE BATTERY BY FIBRE TAPE. MOTOR, BATTERY, SPEEDO AND RECEIVER ARE NOT INCLUDED IN THE KIT.



BODY POSTS

! BUILD L/R BODY POSTS



4 FINAL INSTALLATION

BAG D



ZENH437 x 3
M2.5 x 16mm Socket Cap Screw



ZENH431 x 3
M2.5 x 6 Socket Cap Screw



ZENH552 x 2
M3 Locknut

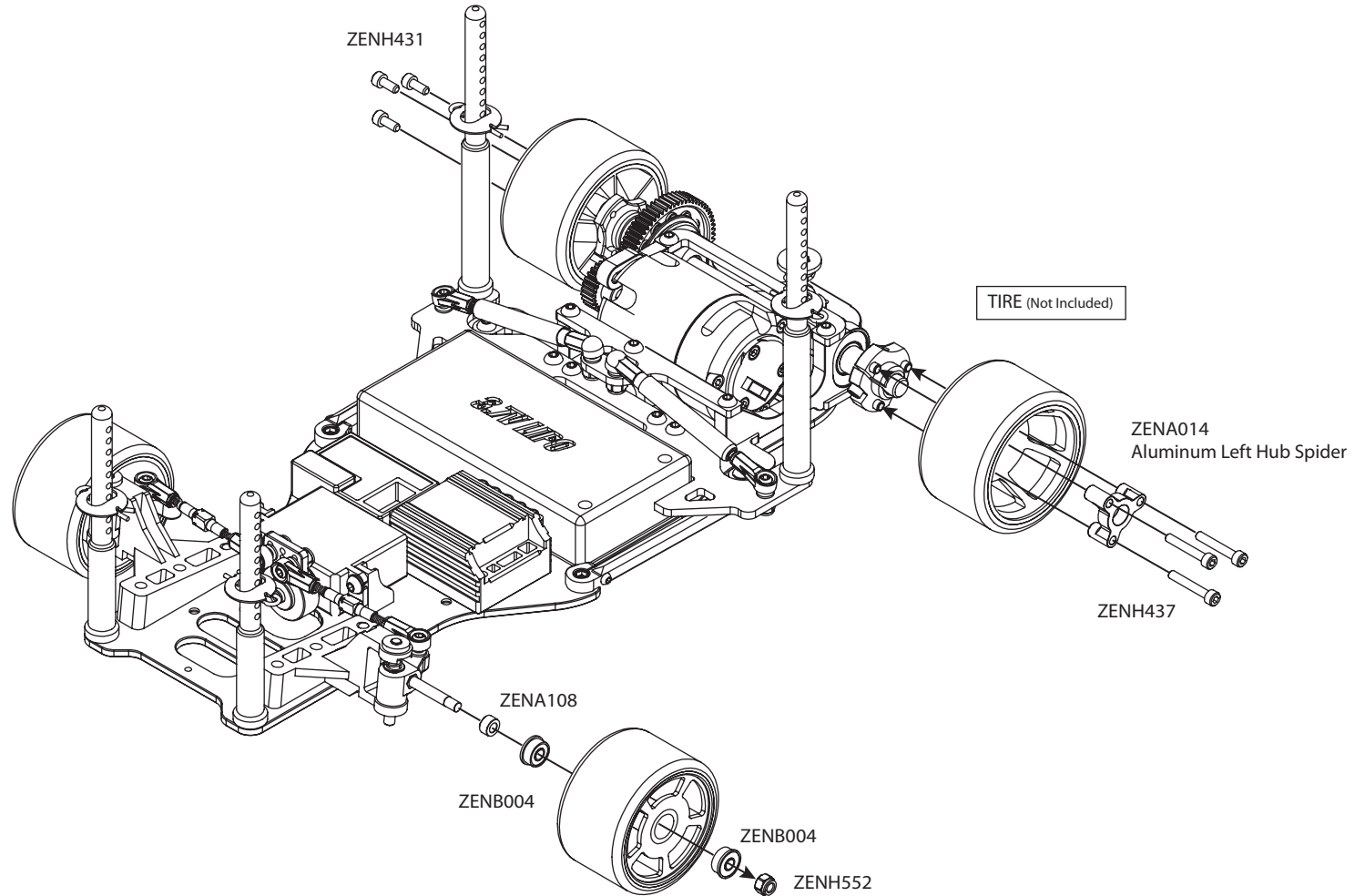


ZENB004 x 4
Bearing 1/8 x 5/16, Flanged



ZENA108 x 2
Front Wheel Spacer 3mm, Black

TIRE INSTALLATION



SET - UP SHEET



DATE / /

DRIVER NAME

TRACK

CONDITION CARPET ASPHALT

TRACTION HIGH LOW

TEMP. AIR TRACK

EVENT BEST LAP TIME QUALIFYING POSITION FINAL POSITION

FRICITION OIL /CST

LENGTH /mm

REAR DAMPER SPRING

SOFT MEDIUM

HARD OTHERS

DROOP /mm

FRONT **REAR**

RIDE HEIGHT /mm

PIVOT BALL SPACER FR RR/mm

RIDE HEIGHT /mm

RIDE HEIGHT /mm

FRONT SPRING

SOFT MEDIUM

HARD OTHERS

KINGPIN OIL /CST

HEIGHT SPACERS /mm

WIDTH SPACERS /mm

SPACERS /mm

TOE ANGLE

ACKERMANN アッカーマン /mm

WIDTH 全幅 /mm

WIDTH 全幅 /mm

SIDE DAMPER TUBE

SIDE TUBE OIL /CST

SIDE TUBE SPRING

SOFT MEDIUM

HARD OTHERS

LENGTH /mm



RIDE HEIGHT

0.00 -0.25 -0.50 -0.75 -1.00 -1.25 -1.50 -1.75 -2.00

AXLE POSITION UP DOWN

DIFF SETTING

TIGHT MEDIUM LOOSE

TIRE SETTING

FRONT	REAR
TIRE <input type="text"/>	TIRE <input type="text"/>
DIAMETER <input type="text"/> /mm	DIAMETER <input type="text"/> /mm
ADDITIVE <input type="text"/>	ADDITIVE <input type="text"/>
ADDITIVE TIME <input type="text"/> /MINS	ADDITIVE TIME <input type="text"/> /MINS
ADDITIVE AREA <input type="text"/>	ADDITIVE AREA <input type="text"/>

MOTOR PINON GEAR T SPUR GEAR T

ROTOR /mm MOTOR TIMING °

FINAL RATIO ROLLOUT

ESC SETUP

BATTERY BODY TOTAL WEIGHT /grams

MEMO

Zen-Racing 

www.zen-racing.co.uk