

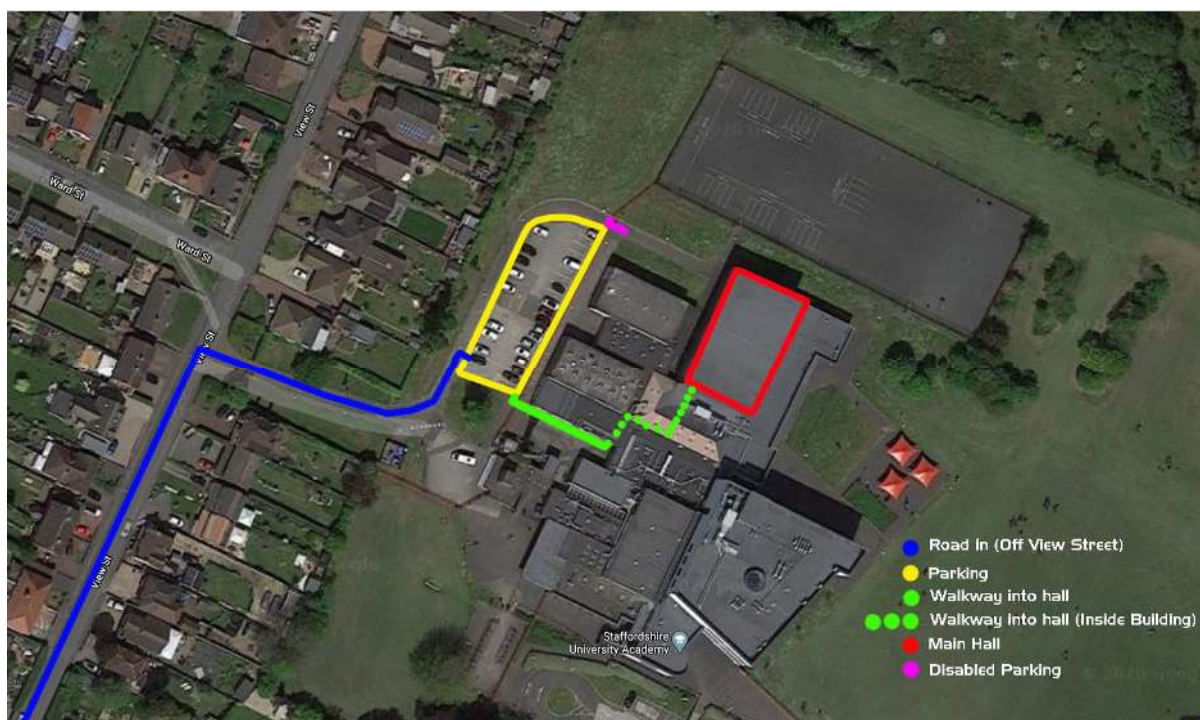
# Welcome to Round 4 of the Mini Masters at Hednesford Indoor Raceway. Hosted by Stafford RCMCC

## The full address of the venue is:

Hednesford Indoor Raceway  
Staffordshire University Academy  
off View Street  
Hednesford  
Cannock  
Staffordshire

Please use post code WS12 4JD

This is a link to google maps <https://goo.gl/maps/BuTFNyLoWGvPSLYA8>



## School Information

### Directions and Car Parking:

(See layout above for the parking area) Please park neatly and please don't block anyone in unless you know them!,

This is the side entrance to the school that allows access to the main sports hall. Please look at the information above as the main Academy entrance on Belt Road **Will Not allow access to the hall.**

### Smoking:

As this is a school the whole site is strictly a no smoking area and that includes vapes and E-cigarettes. **Smoking is only allowed outside of the school gates on View Street**

### **Fire safety**

There are no planned fire alarm tests on the day, so if the fire alarm sounds, please leave the building via the 2 fire escapes at the end of the sports hall (this will be pointed out in the drivers briefing) and assemble on the carpark.

Fire buckets will be placed around the hall for any incidents that may occur.

## **Sunday Meeting Information**

### **Opening Times:**

Hall opens at 07:30 (please respect this time as you will not be allowed in before). Practise round starts at 08:30, with 3 qualifying rounds and 3 finals (approx. timings below)

We should be finished around 16:45 followed by the presentations to the winners.

(Times subject to alteration).

**Please don't try to gain entry before this time unless you are part of the event assembly team.**

### **Meeting Timings:**

07:30	Doors Open - Track Closed
08:15	Driver Briefing
08:30	Practice Round (4 mins)
09:30	Qualifying Round 1
10:40	Qualifying Round 2
11:50	Qualifying Round 3
13:15	Final 1
14:25	Final 2
15:35	Final 3
16:45	Presentation of Round 4 Winners / Pack away track
18:00	Close.

### **Our Track:**

Is in the main sports hall. We run on Lindau carpet that covers an area of almost 400m<sup>2</sup>, with a width of 14 metres and a length of around 25 metres. The track is marked out with 50mm<sup>2</sup> plastic with flexible corner markers.

### **Racing/Driver etiquette:**

Aggressive, threatening, or abusive behaviour will NOT be tolerated, towards other racers, marshals, and club officials.

In qualifying you are racing against the clock not the other racers in your heat so please let any faster cars through.

### **Electric:**

Please bring an extension lead with you for your own use.

### **Pitting & Table and Chairs:**

Pitting this year will be in gym not in the main hall

The venue will have tables and chairs available for your use, you can use two tables and one chair per person (these will be setup, please do not rearrange them), these tables are

approximately 600mm x 600mm. **PLEASE** bring your own table covering with you, this must be used to save any damage to the tables.

**Due to the number of entries if you could bring your own table and chair (might not be required) as we are right on the limit of the number of tables the school has available.**

Bear in mind that you may need to restrict the amount of kit you bring with you as we are only allowed two tables per person.

### **Rostrum:**

Please access the rostrum via the steps closest to race control, once you race has finished egress the rostrum via the steps at the opposite end and go straight to your marshalling point, a table will be available to place your cars and equipment on.

### **Tyre Truing**

A tyre truing area will be set up in our equipment container just outside of the main hall.

### **Air Blowers**

Air blowers are allowed but again must be used outside, cars and shells may be brushed off in the school but please use 1 of the bins provided.

### **Race Results:**

We may not have hard copies of the results readily available, your heats, FTD's and results will all be available LIVE on the day at RC-Results. A large TV screen will be displaying RC-Results in the pitting hall all day

### **Food & Drink:**

NEO's Kitchen will be onsite all day providing hot food and drinks etc, please support them.

### **Hotels:**

Local hotels in the area

All available to be booked via [www.booking.com](http://www.booking.com)

Premiere Inn Cannock South WS11 1SJ  
3 Miles from venue

Holiday Inn Birmingham north (Cannock) WS11 0DQ  
3 Miles from venue

Premiere Inn Cannock Orbital WS11 8XR  
3.5 Miles from venue

Travelodge Rugeley WS15 2AS  
5.5 Miles from venue

Premiere Inn Rugeley WS15 1LX  
7 Miles from venue